



ONLINE REPORTING

Detailed financial and sustainability reporting at your fingertips

Accurate information on your energy costs, usage and environmental footprint is essential to make informed decisions on effective energy management.

e-Smart is an online portal allowing you to access your energy information anywhere, anytime. You can view a breakdown of energy costs and consumption at an organisational, business unit, cost centre or individual site level.

You can also view sustainability information – including energy consumption and carbon emissions. Any authorised person within your business can gain access to view financial, energy management or sustainability reports from the same core data. Our data management process ensures data cannot be deleted or modified without appropriate controls, which reduces the risk of errors.

Reports are available in graph and tabular form that can be downloaded as PDFs or raw data in MS Excel or CSV formats for further analysis.

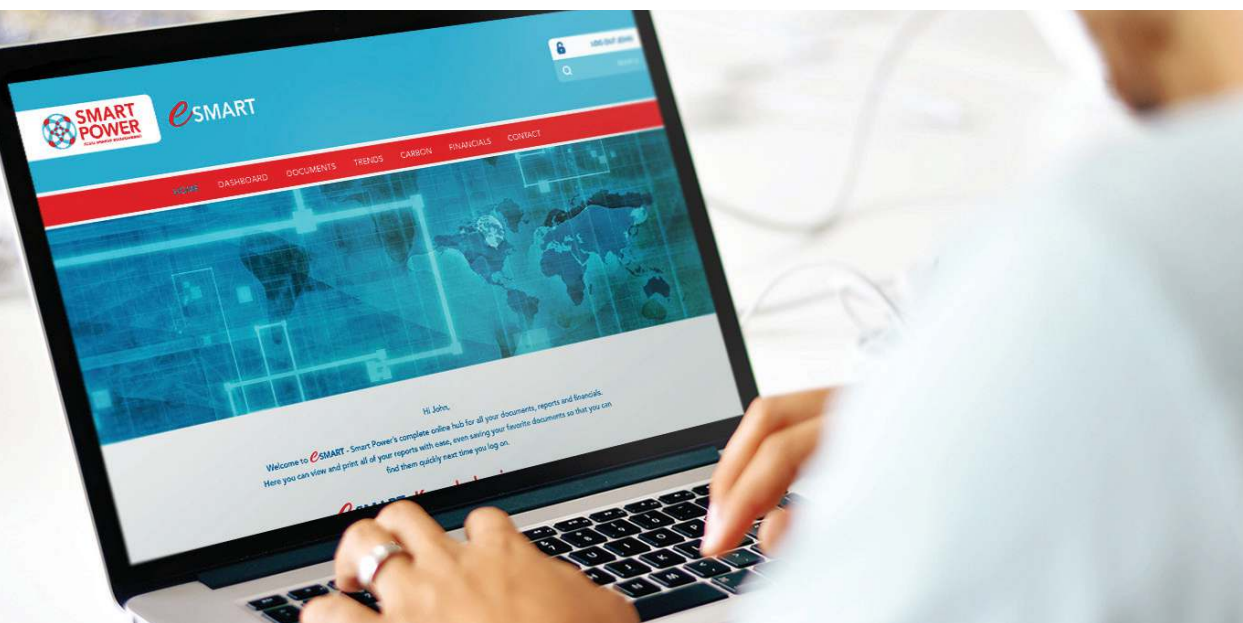
We can also provide customised reporting to meet your needs.

ENERGY MANAGEMENT

e-Smart grants access to monitor trends in your energy use and cost as well as compare current against historical energy use, budgets, targets and other sites. You can view energy reports for periods of use (environmental reporting) as well as determined financial periods (financial reporting).

FEATURES

- View reports by energy type (e.g. electricity, gas) or group them
- Benchmark your sites and compare regions
- Monitor energy information for up to three-years
- Monthly accruals and year-end forecasts available
- Monthly snapshot of consumption, costs, the year-to-date and a forecast to year-end.



SUSTAINABILITY REPORTING

Our sustainability reports satisfies full Green House Gas (GHG) reporting requirements with e-Smart capturing any utility affecting your sustainability reporting, including:

- Oil
- Petrol
- Diesel
- Water
- Waste water
- Recycling
- Coal
- Taxis
- Flights (Domestic, Short haul and Long haul)
- Landfill waste.

We monitor published carbon emission factors to update your e-Smart records. e-Smart is externally audited to ensure it meets all reporting requirements and is used by NZX listed companies to prepare their annual sustainability reports.

BENEFITS

- Central access to a single data source
- Data integrity and protection
- Intuitive technology
- Accurate and up-to-date data
- Independent and convenient 24/7 access

WHAT OUR CLIENTS SAY

"Clear reporting"

"They understand our business and can tailor their support, advice to our needs"



Contact Us

Australia

Smart Power Utilities Pty Ltd
PO Box 608, Eltham
Melbourne VIC 3095 AUS
TEL/FAX +61 3 8669 1657
rod@smtplr.com
smartpowerenergy.com.au

Wellington, New Zealand

Suite 3, 99 Mana Esplanade
PO Box 57058 Mana,
Porirua 5247, NZ
TEL: +64 4 233 0717
FAX: +64 4 233 0716
office@smartpower.co.nz
smartpower.co.nz

Auckland, New Zealand

PO Box 90748,
Victoria Street West,
Auckland, 1142 , NZ
Level 2, 23 Union Street,
Auckland Central 1010, NZ
TEL: +64 9 358 1259
FAX: +64 9 358 1263
shaun.hayward@
energysselect.co.nz
energysselect.co.nz



The management and engineering of the power supply system is a complex task that requires a deep understanding of the power grid and the ability to manage the system in real-time. This is why Total Energy Management is the leading provider of power supply management services. Our experienced engineers and technicians are available 24/7 to monitor the system and respond to any issues that arise. This ensures that the power supply remains stable and reliable at all times. Total Energy Management is the only provider of power supply management services that offers a fully managed service. This means that we take responsibility for the entire power supply system, from monitoring to maintenance. This ensures that our clients receive the highest quality of service and the most reliable power supply. Total Energy Management is the only provider of power supply management services that offers a fully managed service. This means that we take responsibility for the entire power supply system, from monitoring to maintenance. This ensures that our clients receive the highest quality of service and the most reliable power supply.

total energy management